

1. GENERAL

- a. SEE CUR. STD. DWGS. IN THE **RBB**, **RBI**, **RBR**, AND **RPM-SERIES** FOR OTHER RELATED GUARDRAIL DETAILS AND BRIDGE PLANS FOR BRIDGE WING DETAIL.
- b. SEE CUR. STD. DWG. **RDB-SERIES** FOR CURB BOX INLET TYPE B.
- c. GUARDRAIL CONNECTOR TO BRIDGE END TYPE A IS FOR USE ON BOTH BRIDGE ENDS OF AN UNDIVIDED HIGHWAY AND ON THE APPROACH BRIDGE ENDS OF A DIVIDED HIGHWAY. GUARDRAIL CONNECTOR TO BRIDGE END TYPE A-1 IS FOR USE ON THE EXIT END OF A DIVIDED HIGHWAY.

2. MATERIAL REQUIREMENTS

ALL HARDWARE SHALL BE GALVANIZED. (AASHTO M-232)
 5/8" STEEL PLATE "A" (AASHTO M-270)
 7/8" HEX HEAD BOLTS OR STEEL THREADED RODS (LENGTH AS SHOWN)
 7/8" HEAVY HEX NUTS (7/8" THICK) (AASHTO M-291)
 7/8" FLAT WASHERS (3/16" THICK) (AASHTO M-293)
 7/8" BEVELED WASHERS (5/16" MEAN THICKNESS) (AASHTO M-293)
 BOTH THE BOLT AND THREADED ROD SHALL HAVE A MINIMUM OF 50,000 LBS. TENSILE STRENGTH AT THEIR NARROWEST POINT.

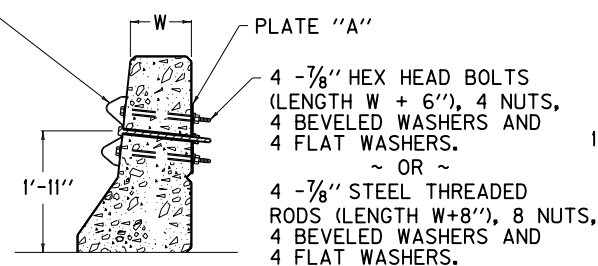
3. CONSTRUCTION METHODS

- a. BACK-UP PLATES ARE NOT REQUIRED WITHIN 2 PLY GUARDRAIL SECTION.
- b. ELIMINATE EXTRA OFFSET BLOCKS WHEN CURB BOX INLET TYPE B IS NOT REQUIRED.
- c. HOLES TO BE FORMED THROUGH BRIDGE WING WITH 1" I.D. PLASTIC PIPE FOR 7/8" BOLTS AND 3/4" I.D. PLASTIC PIPE FOR 5/8" BOLTS, PIPE SHALL REMAIN IN PLACE.
- d. ELIMINATE EXTRA POSTS, OFFSET BLOCKS, RUB RAIL, ONE PLY OF RAIL ELEMENTS AND OTHER INCIDENTALS WHICH ARE IN ADDITION TO NORMAL INSTALLATION OF STEEL BEAM GUARDRAIL USED IN CONSTRUCTION OF DOUBLE STRENGTH RAIL WHEN GUARDRAIL CONNECTOR TO BRIDGE END TYPE A-1 IS REQUIRED.

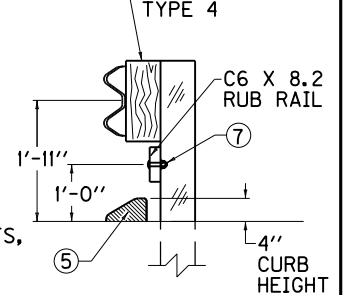
4. METHOD OF MEASUREMENT AND BASIS OF PAYMENT

- a. GUARDRAIL CONNECTOR TO BRIDGE END TYPE A SHALL BE PAID FOR AT THE CONTRACT UNIT PRICE EACH, AND INCLUDES: TERMINAL SECTION NO. 2; ALL ITEMS WHICH ARE IN ADDITION TO THE NORMAL INSTALLATION OF STEEL BEAM GUARDRAIL (EXTRA POSTS, OFFSET BLOCKS, RAIL ELEMENTS, HARDWARE, RUB RAIL, ETC.), AND OTHER INCIDENTALS NECESSARY TO COMPLETE THE INSTALLATION AS DETAILED.
- b. GUARDRAIL CONNECTOR TO BRIDGE END TYPE A-1 SHALL BE PAID FOR AT THE CONTRACT UNIT PRICE EACH, WHICH INCLUDES TERMINAL SECT. NO. 2 AND ALL OTHER INCIDENTALS NECESSARY TO COMPLETE THE INSTALLATION.
- c. STEEL "W" BEAM GUARDRAIL (SINGLE FACE) AND ISLAND CURB ARE SEPARATE BID ITEMS WHICH ARE ALWAYS REQUIRED. CURB BOX INLET TYPE B IS A SEPARATE BID ITEM THAT WILL BE USED WHEN REQUIRED FOR BRIDGE END DRAINAGE.
- d. THE PLASTIC PIPE AND COST OF FORMING SHALL BE INCLUDED IN THE UNIT PRICE BID FOR BRIDGE SUPERSTRUCTURE CONCRETE.

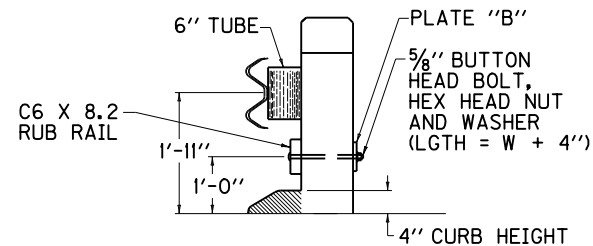
TERMINAL SECT. NO. 2



OFFSET BLOCK TYPE 4



SECTION B-B



SECTION C-C

- ⑤ ISLAND CURB. TRANSITION FROM ISLAND CURB SHAPE TO SHAPE ON BRIDGE WING WITHIN 7'-3". LENGTH OF CURB VARIABLE (22'-3" WHEN L=5'-0") (17'-3" WHEN L=10'-0") (12'-3" WHEN L=15'-0") (7'-3" WHEN L=20'-0"). ON APPROACH END CONSTRUCT 25'-0" OF ISLAND CURB EVEN WHEN CURB BOX INLET TYPE B IS NOT REQUIRED.
- ⑥ 6'-4" WHEN L=5'-0"
 11'-4" WHEN L=10'-0" ★
 16'-4" WHEN L=15'-0"
 21'-4" WHEN L=20'-0"
- ⑦ 5/8" X 3 1/2" BUTTON HEAD BOLT, HEX HEAD NUT.
- 8. CURB BOX NOT REQUIRED UNLESS NEEDED FOR DRAINAGE.
 ★ 10'-0" LENGTH IS USED MOST FREQUENTLY. L EQUALS THROAT LENGTH OF BOX.

SHEET 1 OF 3
 USE WITH CUR. STD. DWG. **BHS-008**

KENTUCKY
 DEPARTMENT OF HIGHWAYS
 GUARDRAIL CONNECTOR
 TO BRIDGE END
 TYPE A AND A-1

STANDARD DRAWING NO. RBC-001-10
 SUBMITTED: [Signature] 12-2-11
 DIRECTOR, DIVISION OF DESIGN DATE
 APPROVED: [Signature] 12-2-11
 STATE HIGHWAY ENGINEER DATE